



Praveen Bagare

AI & ML in TDM

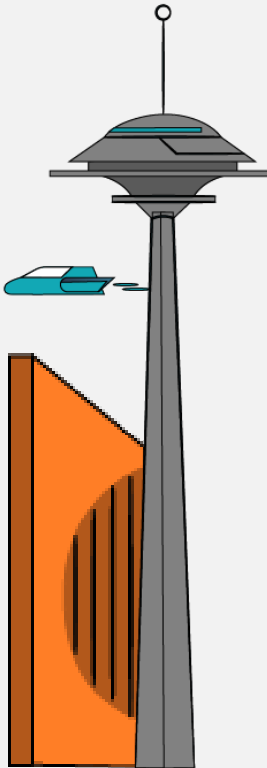


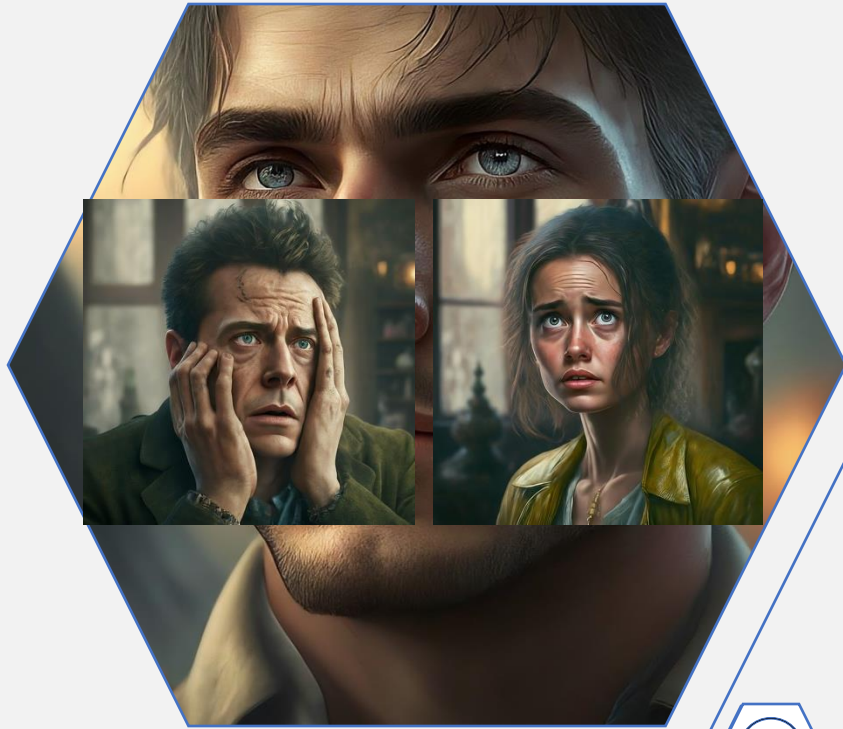
THE FUTURE IS NOW
PNSQC.ORG **OCTOBER 14-16 2024**

What is Test Data Management?

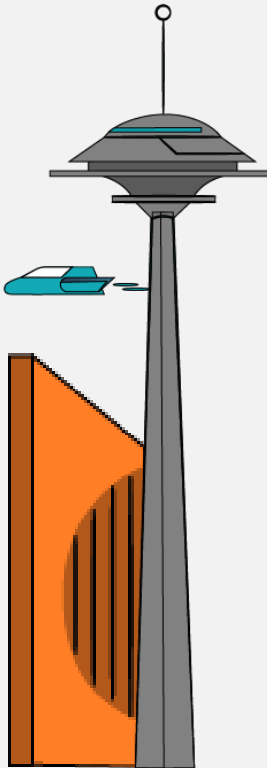
There are many definitions, here is one.

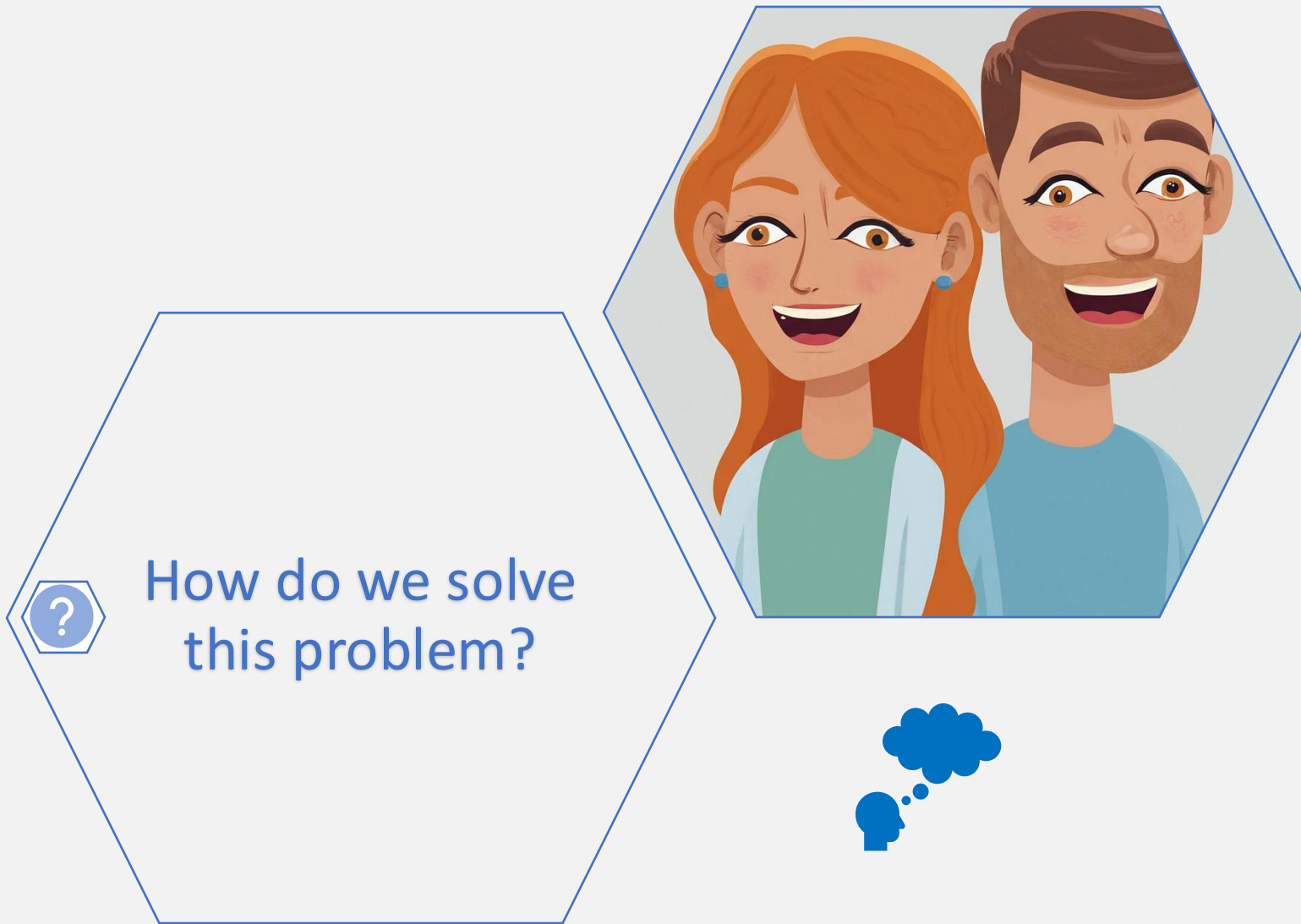
The process of provisioning data for testing ensuring it is of high quality, provisioned in suitable quantity, right format, appropriate environment, and in the stipulated time.





About 50% of a tester's effort is spent around sourcing, maintaining and managing test data.





How do we solve
this problem?

Praveen Bagare
AI & ML in TDM

TDM Approach 1

Leverage Masking

- Discover the data landscape
- Identify a tool
- Find Sensitive data
- Get stakeholder sign off
- Mask and load the data
- Get feedback & improve



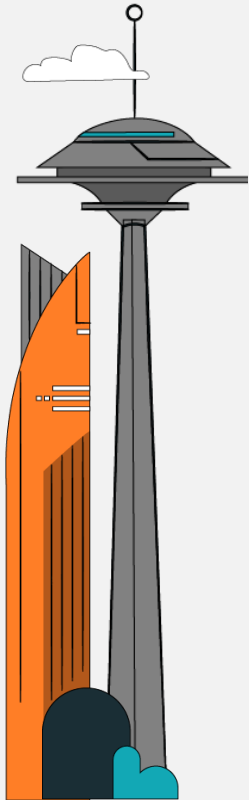
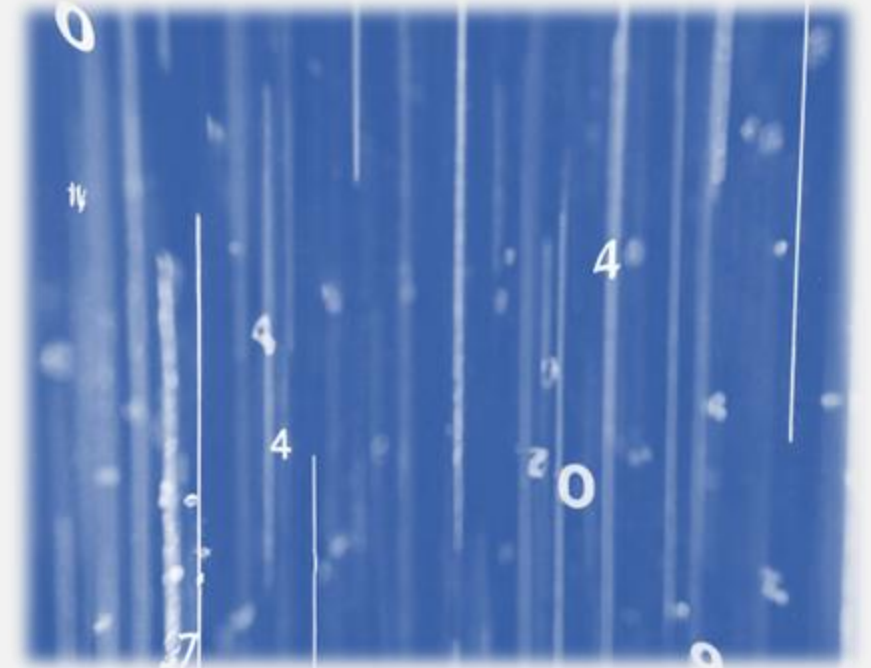
Praveen Bagare
AI & ML in TDM

The image above was created using Imagen text-to-image model.

TDM Approach 2

Leverage Synthetic data generation

- Discovery - Understand metadata, relationships and data flow
- Identify right data generation tool
- Build generation rules, business logic, lookup etc.
- Generate & load synthesized data
- Get feedback & improve



Praveen Bagare
AI & ML in TDM

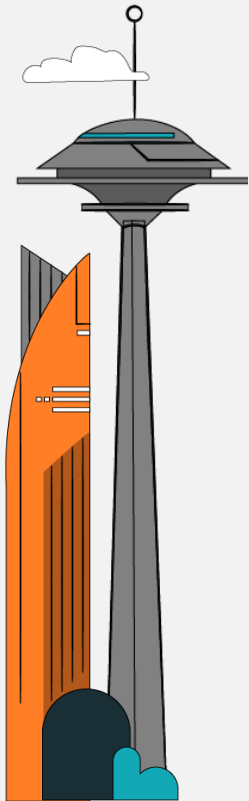
The image above was created using Imagen text-to-image model.



TDM Approach 3

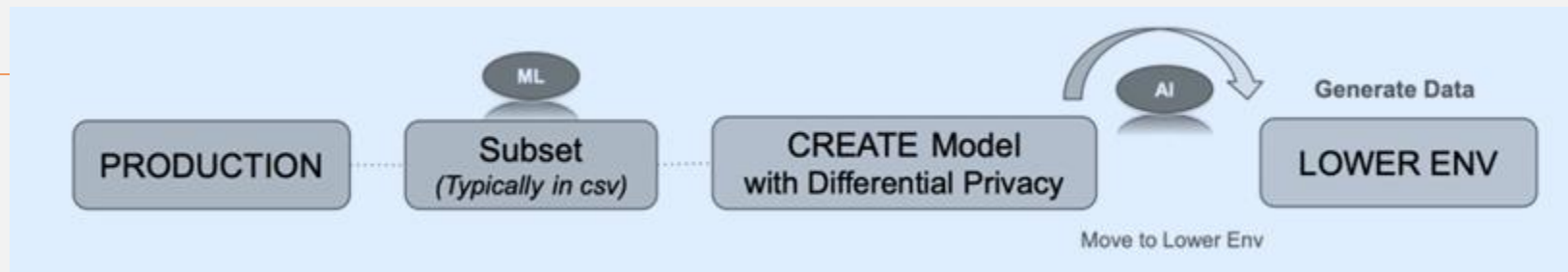
Leveraging AI & ML data generation

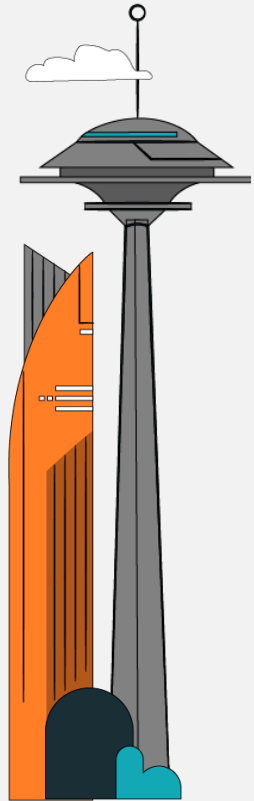
- Identify the data in scope (*subsetting*)
- Update config file (*number of epochs, relationships, pass through etc.*)
- Run machine learning (*Train*)
- Move the differential privacy applied model to desired environment.
- Run the synthetic data generation (*Infer*)



Praveen Bagare
AI & ML in TDM

The image above was created using Imagen text-to-image model.





Approach 3 Demo

Leveraging AI and ML in data generation

Praveen Bagare
AI & ML in TDM



Please share your feedback!

Praveen Bagare

bagare@gmail.com

Praveen_Bagare@epam.com

<https://www.linkedin.com/in/praveen-bagare-56b33169>

Thank you!